

Geography Knowledge Organiser

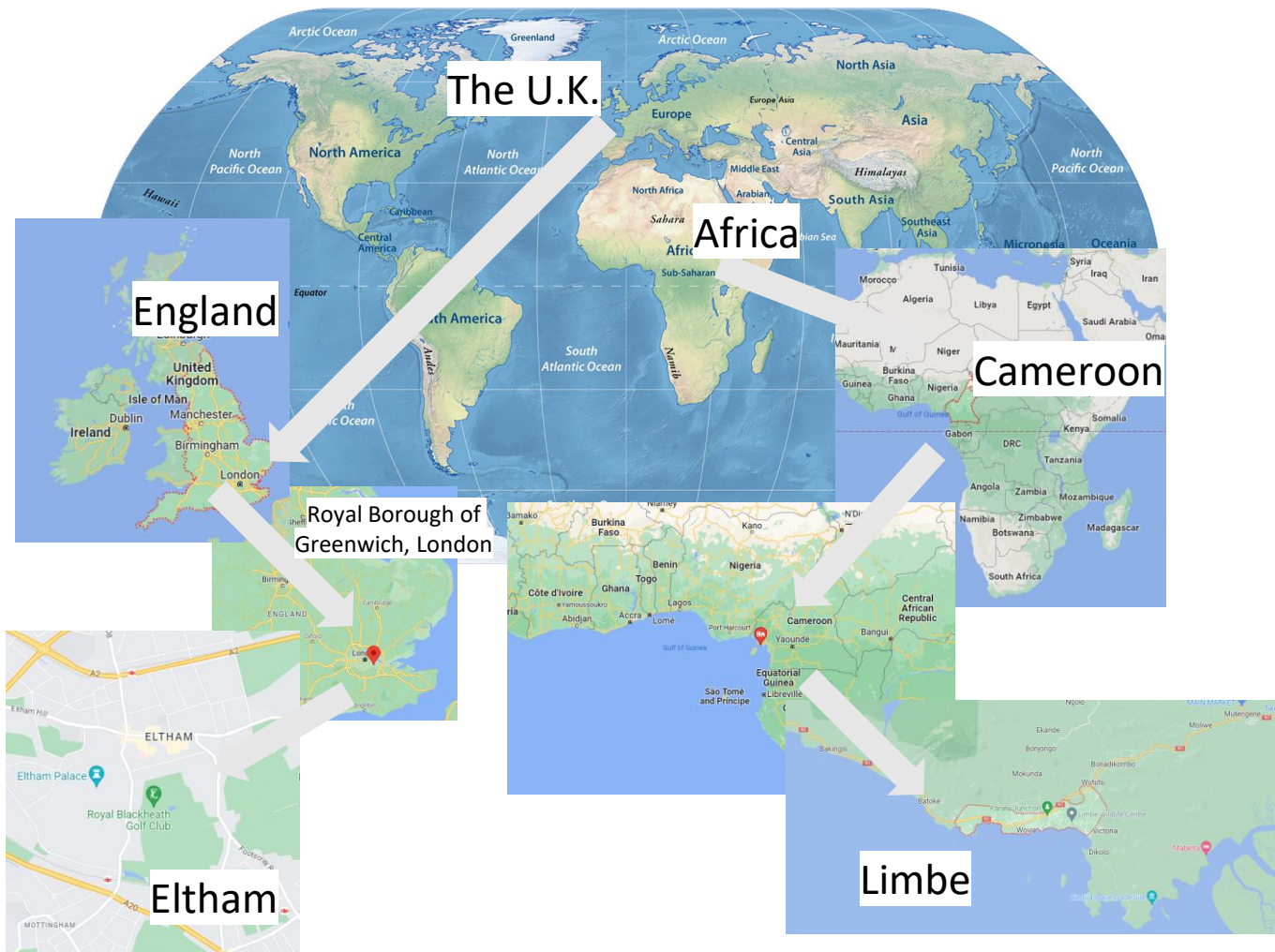
Year 1

Spring (ii)

Can we compare Limbe and Eltham?

Substantive Knowledge

To use maps to locate Limbe in Cameroon and Eltham in England



To use photographs to compare Limbe and Eltham; list similarities and differences.



open spaces



roads



schools



recognised landmarks



To identify the human and physical geography of Limbe and Eltham

The weather in Limbe and Eltham

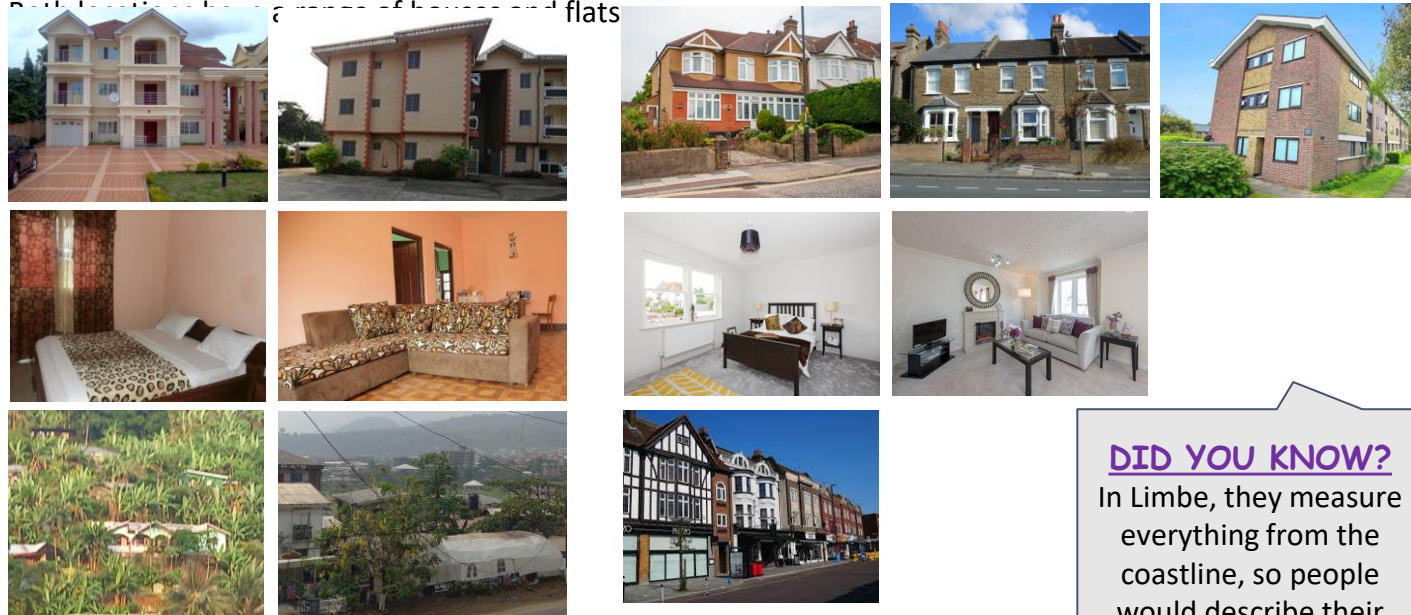
<https://weatherspark.com/compare/y/61812~45062/Comparison-of-the-Average-Weather-in-Limbe-and-London>

In Limbe, the wet season is warm and cloud-covered, the dry season is hot and mostly cloudy. Over the course of the year, the temperature typically varies from 73°F to 88°F which is much warmer than Eltham.

England has a **mild climate**. As an island, the sea affects the weather. This means that Eltham gets cool, wet winters and warm, wet summers. The weather conditions are also very changeable, whereas in Limbe, the weather is rarely changeable.

Homes in Limbe and Eltham

Both locations have a variety of houses and flats



DID YOU KNOW?
 In Limbe, they measure everything from the coastline, so people would describe their house by saying, "My house is at Mile 1." etc

To compare infrastructures and jobs using a questionnaire

What businesses are in the town?

What jobs do people do?

What types of buildings can be seen?

How do most people travel?

Portable Knowledge – What we need to remember

How far is the local doctor or hospital?

Limbe is a seaside town in Cameroon.

Limbe has a volcano and black, sandy beach.

The weather in Limbe is hot all year round but they have a wet and dry season.

Core Vocabulary

Infrastructure- what is needed for an area to run well, such as roads, power supplies, buildings

Human geography- how humans have had influence over the land- man made

